

SBE TODAY

Vol 30, Edition 160

MARCH 16, 2015

Diversity in Action Publish by SBE certified SBE/DBE/MBE

FHWA Says Controversial Highway Guardrail Passes Crash Tests

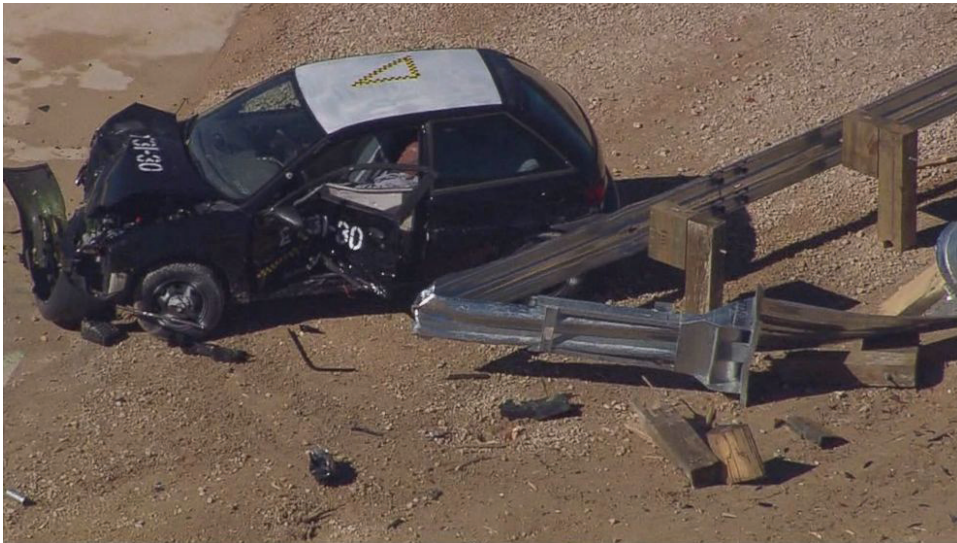


Photo by abcnews.go.com

A widely-used guardrail system blamed by critics and accident victims for lost limbs and deaths has passed a series of new crash tests and remains eligible to be used on American highways, the government said today in a long-awaited decision.

By Tom Ichniowski

A type of roadside guardrail that has sparked controversy about its safety has passed a set of crash tests, and states can continue to seek federal reimbursements for the cost of installing it, the Federal Highway Administration says.

The test results, which FHWA officials announced on March 13, aren't the last word, however, on the ET-Plus guardrail end caps, made by Dallas-based Trinity Industries Inc. FHWA officials say that they will continue to review additional information about the product, including data on how they have performed in the field.

On Capitol Hill, Sen. Richard Blumenthal (D-Conn.) sharply criticized FHWA for what he terms its "inadequate oversight" of the guardrails and contended it let Trinity "conduct sham tests rife with flaws."

Blumenthal and five other Senate Democrats on March 3 also asked the Government Accountability Office to study FHWA's role in ensuring safety of guardrails and other roadside hardware, the process for developing rules governing such equipment and the testing process for the devices.

The ET-Plus controversy heated up last October, when a federal jury in Texas returned a verdict valued at \$525 million against Trinity, which, the senators said, was alleged to have altered the guardrail specifications without notifying FHWA.

Since then, 40 states plus the District of Columbia suspended use of the ET-Plus as of Nov. 18, a FHWA spokesman said. He added that the agency has received no further updates from states since November.

Virginia officials on Dec. 11 filed a lawsuit against Trinity, alleging that the company made changes in the guardrail end cap and didn't disclose the changes to FHWA or the state.

The state attorney general's office said that the lawsuit come after a series of accidents "involving serious injury or death in which the modified guardrail end treatments appear to have malfunctioned."

From the results of the latest group of four tests, which took place at the Southwest Research Institute in Texas from Jan. 15 to Jan. 27, "We have concluded that the ET-Plus meets the applicable crash criteria," FHWA Deputy Administrator Gregory Nadeau told reporters in a March 13 conference call briefing.

Tony Furst, FHWA associate administrator for safety, said that the guardrail at a 31-in. height did not penetrate the vehicle in any of the tests. The guardrail had a 4-in.-wide guide channel.

From Dec. 10, 2014 to Jan. 6, 2015, the research institute ran four other crash tests with the guardrail height set at 27-3/4 in.

In one test, he added, the rail impact caused a "deformation" of the vehicle's exterior of about

6-3/4 in., at about the level of the top of the seat cushion. But that was not enough to give the equipment a failing grade for that test.

Nadeau said that the new test results mean that the ET-Plus "remains eligible for federal funding." He added that it is up to each state to determine which guardrail products it will use.

State departments of transportation typically incur a cost for a highway project then seek reimbursement from FHWA.

"But we are not done," Nadeau said, noting that FHWA now will evaluate "real-world" crash test criteria for the guardrail.

Jeffrey Paniati, FHWA executive director, said, "We have not come to the conclusion whether additional testing is required or not."

Continued on page 4

SMALL BUSINESS EXCHANGE

SBE OUTREACH SERVICES

With 1.5 million businesses in our database, SBE is California's #1 source for diversity outreach.

Advertisements

Placed in the Small Business Exchange newspaper, SBE Today newsletter, and online at www.sbeinc.com

Faxed and Eblast Solicitations

Targeted mailings sent to businesses per your criteria.

Telemarketing

Telephone follow-up calls that follow a script of 5 questions you create.

Computer Generated Reports

Will fit right into your proposal, along with a list of interested firms to contact.

Contact Info:

703 Market Street, Suite 1000

San Francisco, CA 94103

Email: sbe@sbeinc.com

Website: www.sbeinc.com

Phone: (415) 778-6250, (800) 800-8534

Fax: (415) 778-6255

Publisher of
Small Business Exchange
weekly newspaper

California Sub-Bid Request Ads

RGW Construction Inc. is seeking all qualified DBE (Disadvantaged Business Enterprises) for the following project:

Oakville Crossroad Bridge Replacement
County of Napa Contract No. RDS 05-05
Federal Aid Project No. BRLO-5921(010)
Engineer Estimate: \$2,500,000
Goal: DBE 9%
Bids: April 1st, 2015 @ 11:00 AM

Requesting Sub-quotes for (including but not limited to): Electrical Material, Construction Area Signs, Traffic Control, Cold Plane, Demolition/Bridge Removal, Clear & Grub, Roadway Excavation, Structure Excavation/backfill, Landscaping, Hydroseeding, Erosion Control, Aggregate Base, Asphalt Paving, AC Dike, Grinding, Pile Driving, Structural Concrete, Concrete Block & Masonry Retaining Wall, Joint Seal, Reinforcing Steel, Signs Roadside, Rock Slope Protection, Fencing, Survey & Historical Monument, Object Marker, MBGR, Metal Railing, Thermoplastic and Painted Traffic Stripe & Marking, Pavement Marking, Signal and Lighting, Message Signs, Lighting & Sign Illumination, Surveyor, SWPPP Planning, Water Truck, Sweeper & Trucker.

Scope of Work: Replace existing bridge with 2-span, cast in place conventionally reinforced concrete box-girder bridge, retaining walls, bridge approaches widening.

RGW is willing to breakout any portion of work to encourage DBE participation. Contact us for a specific item list.

Plans and Specs are available to view and copy at our office or from County of Napa, Dept. of Public Works, 1195 Third Street, Napa, CA. 707-253-4351. Contact Tim Ross 925-606-2400 tim.ross@rgwconstruction.com for any questions, including bonding, lines of credit, or insurance or equipment or material suppliers. Subcontractors should be prepared to submit payment and performance bonds equal to 100% of their quotation. For bonding and other assistance, please call.

RGW Construction, Inc.

Contractors License A/B 591940
 550 Greenville Road • Livermore, CA 94550 • Phone: 925-606-2400 • Fax: 925-961-1925

An Equal Opportunity Employer

RGW Construction Inc. is seeking all qualified DBE (Disadvantaged Business Enterprises) for the following project:

State Highway in Monterey County Near Lucia From 0.1 Mile south of Big Creek Bridge to 2.8 Miles South of Dolan Creek Bridge
Caltrans No. 05-1F8904
Federal Aid Project No. ACSTP-P001(591)E
Engineer Estimate: \$3,780,000 - 280 Working Days
Goal: DBE 8%
Bids: April 14th, 2015 @ 2:00 PM

Requesting Sub-quotes for (including but not limited to): Construction Area Signs, Traffic Control, Clear & Grub, Structure Excavation/backfill, Hydroseeding, Erosion Control, Irrigation, Asphalt Paving, CIDH Piles, Structural Concrete, Joint Seal, Reinforcing Steel, Sign Structure, Signs Roadside, Concrete Curb & Sidewalk-Misc, Concrete Barrier, Painted Traffic Stripe & Marking, Pavement Marking, SWPPP Planning, Water Truck, Sweeper, and Trucker.

Scope of Work: Construct viaduct.

RGW is willing to breakout any portion of work to encourage DBE participation. Contact us for a specific item list.

Plans and Specs are available to view and copy at our office or the Caltrans website www.dot.ca.gov/hq/esc/oe/. Contact David Aboujudom 925-606-2400 david@rgwconstruction.com for any questions, including bonding, lines of credit, or insurance or equipment or material suppliers. Subcontractors should be prepared to submit payment and performance bonds equal to 100% of their quotation. For bonding and other assistance, please call.

RGW Construction, Inc.

Contractors License A/B 591940
 550 Greenville Road • Livermore, CA 94550 • Phone: 925-606-2400 • Fax: 925-961-1925

An Equal Opportunity Employer

T.B. PENICK & SONS, INC.

IS REQUESTING SUBBIDS FROM QUALIFIED AND CERTIFIED LOCAL BUSINESS ENTERPRISES, SUBCONTRACTORS, SUPPLIERS AND SERVICES FOR ALL TRADES PER CONTRACT DOCUMENTS FOR CONSTRUCT OF:

SFUSD

**VISITACION VALLEY MIDDLE SCHOOL
 MODERNIZATION**

450 Raymond Street, San Francisco, CA 94134

Bid Date: March 18, 2015

BID TIME: 2:00 P.M.

SCOPE OF WORK: Survey, Erosion Control, SWPPP/QSP, Earthwork, Demolition, Hazardous Abatement, Site Utilities, AC Paving, Striping & Signage, Site Concrete, Chain Link Fence, Site Furnishings, Restoration of Surfaces, Shotcrete, Concrete, Concrete Rehabilitation, Rebar, Structural Steel, Misc. Metals, Expansion Joint Cover Assemblies, Rough Carpentry, Finish Carpentry / Millwork, Waterproofing/Caulking, Insulation, Building Envelope Underlayment, Thermoplastic Polyolefin/Roofing, Flashing & Sheet Metal, Firestopping, Joint Sealers, Doors/Frames & Hardware, Overhead Doors, Glass & Glazing, Canopies, Portland Cement Plaster, Dry-wall & Metal Studs, Tile, Acoustical Ceilings, Wood Gymnasium Flooring, Resilient Flooring, Resinous Flooring, Tectum Wall Treatment, Fiberglass Wall Panels, Painting & Coatings, Tackable Wall Panels, Visual Display Boards, Toilet Partitions & Accessories, Signage, Lockers, Fire Extinguishers & Cabinets, Assistive Listening System, Food Service Equipment, Science Equipment, Laboratory Furniture, Entrance Floor Mats & Frames, Manual Window Shades, Electric Window Shades, Fire Sprinklers, Elevator, Wheel Chair Lifts, Emergency Evacuation Chairs, HVAC, Plumbing, Electrical, Low Volt, Final Cleaning, Temp Power and Temp Fencing.

*Project is Prevailing Wage

*Department of Industrial Relations (DIR) registration is required. Please go to <https://efiling.dir.ca.gov/PWCR/> and incorporate your DIR verification to us on March 11, 2012 with your Bid.

FTP Site for ALL bid Documents:

Site: <http://download.tbpenick.com>

Username: vvmms

Password: vvmms2

(username and password are case sensitive)

T.B. Penick & Sons, Inc.

15435 Innovation Drive Suite 100

San Diego, CA 92128

Phone: (858) 558-1800 • Fax (858) 373-1455

Visit Small Business Exchange at www.sbeinc.com
 to download the latest
 SBE Newspaper and SBE Today E-Newsletter

California Sub-Bid Request Ads

RGW Construction Inc. is seeking all qualified DBE (Disadvantaged Business Enterprises) for the following project:

**State Highway in Santa Clara County in San Jose at Minor Avenue Undercrossing
Caltrans No. 04-1SS524**

**Federal Aid Project No. ACNHPI-2801(141)E
Engineer Estimate: \$1,510,000 -90 Working Days
Goal: DBE 9%**

Bids: March 26th, 2015 @ 2:00 PM

Requesting Sub-quotes for (including but not limited to): Fabric & Oils, Construction Area Signs, Traffic Control, Clear & Grub, Roadway Excavation (naturally occurring asbestos), Structure backfill, Erosion Control, Joint Seal, Rock Slope Protection, MBGR, Concrete Barrier, Thermoplastic & Painted Traffic Stripe & Marking, Storm Drain (Underground) and Soil Densification.

Scope of Work: Reconstruct embankment and roadway

RGW is willing to breakout any portion of work to encourage DBE participation. Contact us for a specific item list.

Plans and Specs are available to view and copy at our office or the Caltrans website www.dot.ca.gov/hq/esc/oe/. Contact John Pitsch 925-606-2400 johnp@rgwconstruction.com for any questions, including bonding, lines of credit, or insurance or equipment or material suppliers. Subcontractors should be prepared to submit payment and performance bonds equal to 100% of their quotation. For bonding and other assistance, please call.

RGW Construction, Inc.

Contractors License A/B 591940
550 Greenville Road • Livermore, CA 94550 • Phone: 925-606-2400 • Fax: 925-961-1925
An Equal Opportunity Employer

RGW Construction Inc. is seeking all qualified DVBE (Disabled Veteran Business Enterprises) for the following project:

**STATE HIGHWAY IN ALAMEDA COUNTY IN OAKLAND AND BERKELEY
BETWEEN HILLER DRIVE AND VICENTE ROAD
Caltrans Contract No. 04-0G2104**

**Engineer Estimate: \$890,000 - 108 Working Days
Goal: DVBE 5%**

Bids: April 7th, 2015 @ 2:00 PM

Requesting Sub-quotes for (including but not limited to): Construction Area Signs, Traffic Control, Clear and Grub, Structure Excavation/backfill, Hydroseeding, Erosion Control, Irrigation, Asphalt Paving, CIDH Piles, Structural Concrete, Joint Seal, Reinforcing Steel, Sign Structure, Signs Roadside, Clean & Paint Steel, Concrete Curb & Sidewalk-Misc, Concrete Barrier, Painted Traffic Stripe & Marking, Pavement Marking, SWPPP Planning, Water Truck, Sweeper, & Trucker.

Scope of Work: Upgrade shoulder/sidewalk and construct a retaining wall.

RGW is willing to breakout any portion of work to encourage DVBE participation. Contact us for a specific item list.

Plans and Specs are available to view and copy at our office or the Caltrans website www.dot.ca.gov/hq/esc/oe/. Contact David Aboujoudom 925-606-2400 david@rgwconstruction.com for any questions, including bonding, lines of credit, or insurance or equipment or material suppliers. Subcontractors should be prepared to submit payment and performance bonds equal to 100% of their quotation. For bonding and other assistance, please call.

RGW Construction, Inc.

Contractors License A/B 591940
550 Greenville Road • Livermore, CA 94550 • Phone: 925-606-2400 • Fax: 925-961-1925
An Equal Opportunity Employer

Roebuck Construction, Inc.

We are requesting bid quotations from all Subcontractors and Suppliers and DVBE Subcontract/Supplier for the following

**San Francisco Unified School District • Daniel Weber Elementary School
Modernization, Project No. 11499 • Bid Date: March 24, 2015 @ 2:00PM**

PLEASE FAX US YOUR BID PROPOSAL AT LEAST 2 HOURS PRIOR THE BID OPENING.
THANK YOU.

ROEBUCK CONSTRUCTION, INC.

1780 Oakdale Avenue • San Francisco, CA 94124
Estimator: Ruairi Murphy
Tel: 415-255-1506 • Fax: 415-255-1508
We Are An Equal Opportunity Employer



Drill Tech Drilling & Shoring, Inc.
2200 Wymore Way • Antioch, CA 94509
Phone: 925/978-2060 • Fax: 925/978-2063
www.drilltechdrilling.com

Drill Tech Drilling & Shoring, Inc. (DTDS) is soliciting quotes from certified and qualified SBE/LBE companies for the following project:

**Transbay Block 9
Shoring, Dewatering, and
Ground Improvements Bid Packages
San Francisco, CA
Bid Date: March 26, 2015 @ 2:00PM
Requesting bids by March 24, 2015**

DTDS is actively soliciting quotes for the following scopes of work:

- Trucking - bulk cement delivery within Bay Area
- Trucking - 40 foot flatbeds for steel beams < 70' long; delivery from Central Valley to San Francisco
- Trucking - specialty trucks for steel beams > 70' long; delivery from Central Valley to San Francisco
- Trucking - End dump support //
- Welding Support - onsite welding, union contractor, 2 welding crews with supporting equipment/ materials minimum.
- Fueling Services

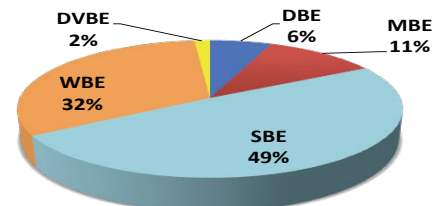
Plans and bid documents are available upon request. Please contact Andres Melgoza at 925/978-2060 or andres@drilltechdrilling.com for assistance.

For questions or comments please contact the estimators below

Steve McCullough
Office: 925/978-2060
Cell: 510/715-5766
Fax: 925/978-2063
steve@drilltechdrilling.com

Darin Gossett
Office: 925/978-2060
Cell: 925/766-2220
Fax: 925/978-2063
Email: darin@drilltechdrilling.com

**AUDIENCE PROFILE
Small Business Exchange, Inc.**



California Sub-Bid Request Ads

DeSilva Gates Construction, L.P. is soliciting for DBEs for the following project:
2014 OVERLAY PROJECT
Federal Aid Project No. STPL-5029(033)
OWNER: CITY OF REDWOOD CITY
 City Hall, 1017 Middlefield Road, Redwood City, CA
BID DATE: March 17, 2015 @ 3:00 P.M.

We hereby encourage responsible participation of local Disadvantaged Business Enterprises, and solicit their subcontractor or materials and/or suppliers quotation for the following types of work including but not limited to: **ADJUST IRON, LOOP DETECTORS, PAVEMENT REINFORCING FABRIC, MINOR CONCRETE, STRIPING, TRUCKING, WATER TRUCKS, STREET SWEEPING, HOT MIX ASPHALT (TYPE A) MATERIAL.**

100% Performance and Payment Bonds may be required for full amounts of the subcontract price. Surety company will have to be approved by DeSilva Gates Construction. DeSilva Gates Construction will pay bond premium up to 2%. Subcontractors must possess current insurance and worker's compensation coverage meeting DeSilva Gates Construction's requirements. Please call if you need assistance in obtaining bonding, insurance, equipment, materials and/or supplies. Plans and specifications are available for review at our Dublin office.

DeSilva Gates Construction

11555 Dublin Boulevard
 P.O. Box 2909
 Dublin, CA 94568-2909
 (925) 829-9220 / FAX (925) 803-4263
Estimator: VICTOR LE
 Website: www.desilvagates.com
An Equal Opportunity Employer

DeSilva Gates Construction, L.P. is soliciting for DBEs for the following project:
City of Yuba City
Garden Highway Complete Streets Rehabilitation
Contract No. 13-02
OWNER: City of Yuba City
 Department of Public Works
 1201 Civic Center Boulevard
 Yuba City, CA 95993
BID DATE: March 11, 2015 @ 10:00 A.M.

We hereby encourage responsible participation of local Disadvantaged Business Enterprises, and solicit their subcontractor or materials and/or suppliers quotation for the following types of work including but not limited to: **Adjust Iron, Cold Plane, Electrical, Fabric, Minor Concrete, Striping, Trucking, Water Trucks, Street Sweeping, Class 2 Aggregate Base Material, Hot Mix Asphalt (Type A) Material**

100% Performance and Payment Bonds may be required for full amounts of the subcontract price. Surety company will have to be approved by DeSilva Gates Construction, L.P. DeSilva Gates Construction, L.P. will pay bond premium up to 2%. Subcontractors must possess current insurance and worker's compensation coverage meeting DeSilva Gates Construction, L.P.'s requirements. Please call if you need assistance in obtaining bonding, insurance, equipment, materials and/or supplies. Plans and specifications are available for review at our Dublin office.

DeSilva Gates Construction

11555 Dublin Boulevard
 P.O. Box 2909
 Dublin, CA 94568-2909
 (925) 829-9220 / FAX (925) 803-4263
Estimator: VICTOR LE
 Website: www.desilvagates.com
An Equal Opportunity Employer

Gallagher and Burk, Inc. is soliciting for LBEs for the following project:
SAN FRANCISCO INTERNATIONAL AIRPORT
TAXIWAY Z1 BLAST DEFLECTOR
Contract No. 9354
OWNER:
 CITY AND COUNTY OF SAN FRANCISCO
 San Francisco International Airport, 676 N. McDonnell Road, C, San Francisco, CA 94128
BID DATE: MARCH 24, 2015 @ 2:00 P.M.

We hereby encourage responsible participation of Micro and Small Local Business Enterprises Certified by the City and County of San Francisco, and solicit their subcontractor or materials and/or suppliers quotation for the following types of work including but not limited to:

SOIL STABILIZATION FABRIC, PCC PAVEMENT, PAINT REMOVAL, STRIPING, MINOR CONCRETE STRUCTURES, JET BLAST DEFLECTOR, ELECTRICAL, BARRIER RAIL, CEMENT TREATED BASE, CRUSH AGGREGATE BASE, COLD-MILL ASPHALT CONCRETE, TRUCKING, WATER TRUCKS, STREET SWEEPING.

100% Performance and Payment Bonds may be required for full amounts of the subcontract price. Surety company will have to be approved by Gallagher and Burk, Inc. Gallagher and Burk, Inc. will pay bond premium up to 2%. Subcontractors must possess current insurance and worker's compensation coverage meeting Gallagher and Burk, Inc.'s requirements. Please call if you need assistance in obtaining bonding, insurance, equipment, materials and/or supplies. Plans and specifications are available for review at our Dublin office.

Gallagher & Burk, Inc.

344 High Street • Oakland, CA 94601
 Phone: (510) 261-0466 • FAX (510) 261-0478
Estimator: ALAN MCKEAN
 Website: www.desilvagates.com

An Equal Opportunity Employer

REQUEST FOR DBE SUBCONTRACTORS AND SUPPLIERS FOR:

Hwy 280 Embankment and Roadway
San Jose - Caltrans #04-1SS524
BID DATE: March 26, 2015 @ 2:00 PM

We are soliciting quotes for (including but not limited to): **Trucking, Lead Compliance Plan, Construction Area Signs, Traffic Control System, Portable Changeable Message Sign, Water Pollution Control Program, Sweeping, Asbestos Compliance Plan, Treated Wood Waste, Noise Monitoring, Dust Control Plan (Naturally Occurring Asbestos), Core Concrete, Clearing & Grubbing, Erosion Control, Roadway Excavation (Naturally Occurring Asbestos), Structure Excavation, Soil Densification (High Density Polyurethane), Structure Backfill, Controlled Low-Strength Material, Imported Borrow, Geosynthetic Reinforcement, Prime Coat, Geosynthetic Pavement Interlayer, Tack Coat, Structural Concrete Approach Slab, Minor Concrete, Joint Seal, Underground, Rock Slope Protection, Misc. Iron & Steel, Concrete Barrier, Paving Notch Extension, MBGR, Striping & Marking and Construction Materials**

O.C. Jones & Sons, Inc.

1520 Fourth Street • Berkeley, CA 94710 • Phone: 510-526-3424 • FAX: 510-526-0990
Contact: Jean Sicard

An Equal Opportunity Employer

100% Performance & Payment Bonds may be required. Worker's Compensation Waiver of Subrogation required. Please call OCJ for assistance with bonding, insurance, necessary equipment, material and/or supplies. OCJ is willing to breakout any portion of work to encourage DBE Participation. Plans & Specs are available for viewing at our office or through the Caltrans Website at www.dot.ca.gov/hq/esc/oe/weekly_ads/index.php.

FHWA Says Controversial Highway Guardrail Passes Crash Tests

Continued from page 1

That decision will be based on work of joint FHWA-American Association of State Highway and Transportation Officials task force that is reviewing crash test data from a variety of other sources, including state DOTs and responses to a FHWA Federal Register request for information.

Jeff Eller, a Trinity spokesman, said in an interview, "We were pleased by the results that [FHWA] released today as well as their comment that it remains eligible for federal reimbursement."

He added, "We've said all along that when this product is properly installed and maintained, it performs within its design criteria."

Source: <http://enr.construction.com>

California Sub-Bid Request Ads



HENSEL PHELPS

Plan. Build. Manage.

WE ARE REQUESTING BIDS FROM SUBCONTRACTORS

East County Hall of Justice
Dublin, CA

Bid Package #5: Expansion Joints, Acoustical, Painting, Tile, Resilient Flooring, Carpeting, Vapor Emissions, Resinous & Elastomeric Flooring, Site Concrete, Fencing & Gates, Landscape & Irrigation, Flashing & Sheet Metal, Signage

Bid Package #5 Bid Date: April 24, 2015 @ 2:00 PM

The Project involves the construction of a new complex of buildings on a 20-acre site in the northeastern part of Dublin. The buildings will include a new 5-story Courthouse Building containing 13 criminal courtrooms and associated support spaces and facilities (a total of approximately 146,000 GSF); a new 2-story County Building providing space for the Public Defender, District Attorney, and Probation Department (approximately 42,000 GSF); and a central lobby/security screening entrance area connecting the two main building elements.

The "Instructions to Bidders" will contain all information regarding bid forms, plans, specifications, time and location bids are to be submitted. Bid Documents will be available electronically upon request via ISQFT.com and posted on the Bay Area Builders Exchange starting on 03/30/2015. Please submit requests to Jose Martinez at JMartinez@henselphelps.com.

Project is subject to a Project Labor Agreement. Hensel Phelps is signatory to the Carpenters, Laborers and Cement Finishers.

Successful Bidders will be required to furnish 100% Payment and Performance Bonds for all subcontracts exceeding \$50,000. Subcontracts shall be executed on Hensel Phelps Construction Co. standard subcontract or purchase agreement forms, copies of which will be included with the bid documents. Workers' Compensation Waiver of Subrogation will be required of all Subcontractors.

WE ARE AN EQUAL OPPORTUNITY EMPLOYER

HENSEL PHELPS CONSTRUCTION CO.

226 Airport Parkway, Suite 150 • San Jose, California 95110
PH. (408) 452-1800; Fax (408) 452-1855



SWINERTON Management & Consulting

Requesting subconsultant qualifications from all qualified construction management, estimating, scheduling, quality control, and inspection firms which are Disadvantaged Business Entities (DBE), which is defined as a "for-profit small business concert owned and controlled by a socially and economically disadvantaged person(s) as defined in Title 49, Code of Federal Regulations (CFR), Part 26.5

PROJECT INFO:

Project Name: City of Manhattan Beach,
On-Call Construction Management and
Inspection Consultant Services

OUTREACH GOALS:

4% DBE Participation

DESCRIPTION:

Various capital improvement projects for the City of Manhattan (including structures, roads, and water/waste infrastructure, etc.) and the requested services will include construction management, inspections, quality control, estimating, and scheduling.

Qualifications are shall be due to:

Swinerton Management & Consulting on March 17th no later than 11:00pm. Swinerton Management & Consulting will receive qualification to Michael Shawver at mshawver@swinerton.com. Questions and additional information regarding the project can be directed to Michael Shawver: (213) 896-3400

Assistance in helping subconsultants obtaining insurance, bonds, lines of credit and/or insurance will be provided. For more information please contract Charles "Rick" Moore (415) 984-1289.

An Equal Opportunity Employer



Proven Management, Inc.

2000 5th Street, Berkeley, CA 94710 • Phone: 510-671-0000 • Fax: 415-421-9600

Requests proposals/quotes from all qualified and certified SBE/MBE/WBE/DBE subcontractors, suppliers, and truckers for the following project:

BART EARTHQUAKE SAFETY PROGRAM BAY FAIR STATION & ASHLAND AVENUE UNDERPASS

BART Contract No. 01RQ-120-2014

Bids: March 17, 2015 @ 2pm

SUBCONTRACTING GOALS - MBE-23% - WBE-12%

Trades include but not limited to: Selective Demolition; Asbestos Abatement; Lead-Based Paint Abatement; Concrete Work; Metal Welding; Structural Steel Framing; Metal Fabrications; Metal Stairs/Railings; Decorative Metal; Thermal & Moisture Protection; Metal Doors/Frames; Overhead Coiling Doors; Tile Replacement & Restoration; Architectural Work; Tiling; Acoustical Ceiling Panel; Painting; Bird Control Devices; Plumbing & HVAC Insulation – Raceways for Facility Services; Electronic Circuits, Wires & Cables; Fire Suppression; Restoration of Facility Services; Storm Drainage; Electrical Work; Telephone Systems/PA System; CCTV; Fire Protection & Alarm System; Earthwork; Clearing & Grubbing; Slope Protection; Shoring & Underpinning; AC Paving; Concrete Paving; Concrete Curbs, Gutters & Walks; Parking Bumpers; Excavation; Chain Link Fences & Gates; Planting & Irrigation; Utility Structures; Trenching & Backfilling for Utilities.

PMI will provide assistance in obtaining necessary bonding, insurance, equipment, supplies, materials or other related services. 100% Payment & Performance bonds will be required from a single, Treasury-listed surety company subject to PMI's approval. PMI will pay bond premium up to 1.5%. Subcontractors awarded on any project will be on PMI's standard form for subcontract without any modifications. For questions or assistance required on the above, please call.

We are an Equal Opportunity Employer

B-Side, Inc. is requesting quotations from all City & County of San Francisco HRC Certified MBE/DBE/WBE/DV BE/SBE/ LBE and all qualified Subcontractors/Vendors for the project

Alteration of Cafeteria and Library at Jefferson Elementary School (SFUSD Project NO: 11720)

Owner: SFUSD

Bid date: March 25, 2015 at 2:00 PM.

Trades requested are: Selective DEMO, Hazmat Abatement and all other trades, applicable to the project scope of work.

Please submit quotes via fax or email no later than March 25, 2015 before 12:00 pm.

B-Side Construction, Inc.

1940 Union Str. #9; Oakland, CA 94607
Phone: 510-451-7527; Fax: 510-451-7517
Email: info@bsideconstruction.com

Bid Documents are available at Builder's Exchange of Alameda County. Please contact our office for plans and specs help.

**Visit
www.sbeinc.com to download
a PDF version of the
latest SBE Newspaper and SBE Newsletter**

California Sub-Bid Request Ads

**PROJECT: OLD OTAY MESA ROAD IMPROVEMENTS
K-15-1216-DBB-3
City of San Diego**

****THIS PROJECT HAS A 31.3% SLBE/ELBE GOAL****

**BID DATE: MARCH 18, 2015 • BID TIME: 2:00 P.M.
Please respond by 5:00 p.m., March 17, 2015**

We are seeking quotes from certified SLBE/ELBE's including, but not limited to, the following work items: Temp K-Rail, Clearing & Grubbing, Structure Exc, Stone Rip Rap, Cold Mill AC, AC Overlay, PCC Sidewalk, Curb Inlet, Catch Basin, Drainage Ditch, Curb & Gutter, Cable Railing, Guardrail, Chain link Fence, Storm Drain, Street Lighting, Survey Monuments, Re-vegetation & Erosion Control, WPCP, Noise Barrier, Trucking, Sweeping.



9685 Via Excelencia, Ste 200 • San Diego, CA 92126
Phone: (858) 536-3100 • Fax: (858) 586-0164
e-mail inquiries to: estimating@coffmanspecialties.com

Insurance and 100% Payment & Performance Bonds will be required. We will provide assistance/advice with obtaining Bonds/Insurance/Credit/Equipment. Plans and specs are available at no cost to interested SLBE-ELBE firms from the City of San Diego Public Works website and/or our San Diego Office. We are an EOE & seriously intend to negotiate with qualified firms.

SKANSKA

Sub-Bids Requested From Qualified D/S/LBE Subcontractors & Suppliers

**Transbay Transit Center – Tenant Improvements
Transbay Joint Powers Authority/ Webcor Obayashi Joint Venture
Contract No.: Bid Build – 08-04-CMGC-000, pkg. no. TG16.0
DBE/SBE/LBE Goal: 19%**

Subcontractor Quote Due Date: April 15, 2015 - 12:00PM

Skanska is interested in soliciting in Good Faith all subcontractors as well as certified D/L/SBE companies for this project. All interested subcontractors, please indicate all lower tier D/L/SBE participation offered on your quotation as it will be evaluated with your price. Please call if we can assist you in obtaining bonding, lines of credit, insurance, necessary equipment, materials and/or supplies. Skanska will also review breaking out scope packages and adjusting schedules to help permit maximum participation.

Quotes requested for contractors, suppliers and service providers include, but are not limited to:

Subcontracting: Concrete masonry units, metal framing, drywall, building insulation, penetration fire-stopping, toilet accessories, miscellaneous metals for own work, bird deterrent, ballistic resistant panels, acoustic ceiling tiles, acoustic wall treatments, tile, tile carpeting, resilient base, painting, site paints, high performance coatings, doors, frames, hardware, low voltage wiring for own scope of work, interior architectural woodwork, countertops, prefabricated buildings, photo-luminescent exit accessories (PLEA), and final cleaning on complex projects.

Instructions for bidders: For information on plans and specs and/or receive an Invitation to Bid, please submit your information to lindsay.corotis@skanska.com. Plans and Specs are also available at several locations throughout California. For project documents, visit <http://transbaycenter.org/rfp/interiorsfinishes>. For any questions, contact Skanska at (510) 285-1885 or email to lindsay.corotis@skanska.com

Subcontracting Requirements:

Skanska's insurance requirements are Commercial General Liability (GL): \$1M ea. occ., \$1M personal injury, \$2M products & completed operations agg. and general agg.; \$1M Auto Liability; \$5M Excess/Umbrella and \$1M Workers Comp. Endorsements and waivers required are the Additional Insured End., Primary Wording End., and a Waiver of Subrogation (GL & WC). Other insurance requirements may be necessary per scope. Subcontractors may be required to furnish performance and payment bonds in the full amount of their subcontract by an admitted surety and subject to approval by Skanska. Skanska will pay bond premium up to 1%. Quotations must be valid for the same duration as specified by the Owner for contract award. Conditions or exceptions in Subcontractor's quote are expressly rejected unless accepted in writing.

There is a PLA agreement for this job. It can be found at:

<http://transbaycenter.org/tjpa/doing-business-with-the-tjpa/project-labor-agreement>. Skanska is signatory to the Laborers and Carpenters Unions. Subcontractors must provide weekly, one original and one copy of all certified payrolls, including non-performance and fringe benefit statements if required by law or by the Prime Contract. Subcontractor scope (including any conditions or exceptions) is required 24 hours prior to bid deadline to allow proper evaluation.

Skanska is an Equal Opportunity Employer
Skanska Ph: (510) 285-1885; Fax: (510) 285-1801
Email: lindsay.corotis@skanska.com

Pacific States Environmental Contractors, Inc. (PSEC) is preparing a bid as a Prime Contractor for the project listed below:

Ardenwood Creek (Line P) Restoration and Flood Control Improvements, In Fremont, Alameda County, California, Zone NO. 5 Project
Owner: Alameda County Flood Control and Water Conservation District

BID DATE: April 7, 2015 at 2:00pm.

We hereby encourage responsible participation of Minority/Women-owned Enterprises (M/WBEs) and solicit their subcontractor or materials and/or suppliers for the following types of work including but not limited to:

Concrete, Trucking, Fencing, Hydroseeding, Electrical, Landscaping, Underground Pipe, Storm Drain, Striping and Signage

At our discretion, 100% Payment and 100% Performance bonds may be required as a subcontract condition. Please call if you need assistance in obtaining bonding, insurance, equipment, materials and/or supplies for this project.

This will be a PREVAILING WAGE JOB.

Plans and specifications may be reviewed at our office located at 11555 Dublin Boulevard, Dublin, CA, or by using the Dropbox link at: https://www.dropbox.com/sh/af0z5e4va3udp65/AACxzDTDx-CAe02tCbILj_lna?dl=0

As well as purchasing at: www.ipdservices.com/clients/easbay?ALCO

Or by contacting:

Central Blue Print at 17132 E. 14th Street Hayward, CA 94541 (510) 276-3375, East Bay Blue Print and Supply at 1745 14th Avenue, Oakland, CA 94606 (510) 261-2990 or Custom Blue Print 1944 Mt Diablo Boulevard, Walnut Creek, CA 94596 (925) 932-3113 PSEC is willing to break-out any portion of work to the participation of socially and economically disadvantaged Minority/Women-Owned Enterprises and solicit their subcontractor or materials and/or suppliers and trucking quotation. If you require any assistance, please contact the Estimator, Keith Donahue email him at kdonahue@pacificstates.net or call (925) 803-4333 and bids may be faxed to us at (925) 803-4334. We are an equal opportunity employer.

**Pacific States
Environmental Contractors, Inc.**
CAL LIC. NO. 723241

11555 Dublin Boulevard • Dublin, CA 94568-2909
Phone: (925) 803-4333 • FAX: (925) 803-4334

ESTIMATOR: Keith Donahue
EMAIL: kdonahue@pacificstates.net

An Equal Opportunity Employer

California Sub-Bid Request Ads

Turner

Request for Qualification (RFQ)
RFQ Period: March 16, 2015 - March 27, 2015

Turner Construction Company (Turner) is seeking qualified Subcontractors for the following project:

San Francisco International Airport
Contract No. 10003.71
Interim Boarding Area B and Security Screening Checkpoint

Turner has been awarded this project, which is the construction of a temporary, fully functional Interim Boarding Area B facility with up to nine (9) aircraft gates and associated Security Screening Checkpoint. The Interim Boarding Area is anticipated to perform and serve for a period of four (4) to six (6) years during demolition of the existing Boarding Area B and central area of Terminal 1 and the construction of the new permanent facility. Additionally, some modifications to the adjacent Boarding Area C will be required as part of this Contract to ensure optimum operations of the future reconstructed T1 Complex.

Only those Subcontractors who meet pre-qualification criteria and are deemed pre-qualified to perform work on their respective trades will be invited to submit a bid. Trade Subcontractors who do not submit the pre-qualification information and are not pre-qualified will not be allowed to bid the project.

Turner is seeking RFQs for the following trade packages:

| TRADE PACKAGE DESCRIPTION | EST VALUE (in Thousands) | TRADE PACKAGE DESCRIPTION | EST VALUE (in Thousands) |
|-----------------------------------|--------------------------|---|--------------------------|
| SITE UTILITIES | \$2,000 | PLUMBING | \$1,200 |
| GENERAL REQUIREMENTS | \$750 | FIRE PROTECTION | \$600 |
| INVESTIGATION | \$100 | BAGGAGE HANDLING SYSTEM (BHS) | \$5,000 |
| BUILDING 710 MODIFICATIONS | \$500 | PASSENGER BOARDING BRIDGE (PBB) | \$6,000 |
| DEMO FUEL AREA | \$1,500 | SPECIAL SYSTEMS (PA/AV, Low Voltage, etc) | \$6,000 |
| MECHANICAL | \$10,000 | EXCAVATION / FOUNDATIONS / CONCRETE | \$1,500 |
| ELECTRICAL | \$9,000 | PILES | \$500 |
| ELEVATOR / ELEVATOR MODIFICATIONS | \$300 | STRUCTURAL STEEL / METAL DECK | \$5,000 |
| | | INTERIOR DEMO | \$2,000 |

Contract documents, including drawings and specifications, for the project are anticipated to be available for bidding 2Q/2015. Construction start is by 3Q/2015.

There is a requirement of 23% LBE participation for this project, which must be met with LBE firms that are certified LBE by the San Francisco Contract Monitoring Division. At bid time, each individual trade package will have a minimum participation requirement listed in order to meet the overall Project LBE participation requirement.

For information on how to Pre-Qualify with Turner, please contact Ana Valencia (510.267.8228 or avalencia@tcco.com)

Seeking MBE, DVBE, DBE, WBE, SBE, SBRA, LSAF, HUB subcontractors and suppliers for AGUA HEDIONDA SEWER LIFT STATION, VISTA/CARLSBAD INTERCEPTOR SEWER REACHES VC11B-VC15 AND RECYCLED WATER LINE; CONTRACT NO. PWS13-40UTIL

Project Owner: City of Carlsbad, CA

Project Location: Carlsbad, CA

Bid Date: Wednesday April 1, 2015

Trades: SWPPP, Dewatering/Sewer Bypassing, Shoring/Shafts/Piling, Landscaping & Irrigation, Fencing, AC Paving/Curbs/Stampcrete, Striping/Pavement Markings, Horizontal Directional Drilling, Microtunneling, Reinforcing Steel, Misc. Metal/Structural Steel, HVAC, Electrical & Instrumentation, Supply of Pipe and Valves, Aggregates, Redi-Mix Concrete.

Plans are available to download on City of Carlsbad Bids & Contracts website

Pulice Construction, Inc.

591 Camino de la Reina, Suite 1250 • San Diego, CA 92108

Phone: (619) 814-3705 • Fax: (619) 814-3770

Contact: **Arinda Cale**, acale@pulice.com; **Kimberly Bell**, kbell@pulice.com

An Equal Opportunity Employer



Request for
CERTIFIED SMALL BUSINESS
 Subcontractors & Suppliers for:

Transbay Transit Center (TG16.0)
INTERIOR / FINISH TRADE PACKAGE
 First & Folsom Streets, San Francisco, CA

BID DATE: APRIL 14, 2015 @ 2:00 PM

SBE GOAL: 19%

Requesting Quotes for (but not limited to):
INTERIOR / FINISH TRADES

Plans & Specs are available via
www.smartbidnet.com

Swinerton encourages the use of
 2nd Tier Subcontractors & Suppliers

Quotes must comply with Contract requirements.

Payment & Performance Bonds May Be Required.

Should you need assistance in obtaining bonds, lines of credit and/or insurance, please contact our **Vice President of Community Relations, Mr. Charles "Rick" Moore** at (415) 984-1289 or via email at: RMOORE@SWINERTON.COM

Swinerton Builders

260 Townsend Street, San Francisco, CA 94107

Phone (415) 421-2980 | Fax (877) 349-7149

John Doherty | jdoherty@swinerton.com

SWINERTON IS AN EQUAL EMPLOYMENT OPPORTUNITY, MINORITY, WOMEN, DISABILITY, AND VETERAN EMPLOYER



Looking for Subcontractors, Vendors, and Suppliers?

Call 1-800-800-8534

or visit us at www.sbeinc.com

Advertise your Sub-Bid Requests in the Small Business Exchange. With a monthly readership of 75,000, SBE reaches a diverse audience, cutting across ethnic and gender lines as well as traditional industry segments.


SBE Newspaper boasts a weekly readership of **75,000**
 SBE Delivers competent, competitive, and certified subcontractors, vendors, and suppliers

2015 Small Business Procurement Fair



2015 Small Business Procurement Fair

All Small and Disabled Veteran Businesses are invited to attend




Don't miss the opportunity to meet Caltrans purchasers and have an opportunity to network and sell your products!

March 25, 2015

Register @
<http://www.dot.ca.gov/dist4/smallbusiness/>


Vendor Sign-in: 10:00 AM
Procurement: 10:30 AM – 12:30 PM

BUSINESS PROCUREMENT FAIR 2015



(These are the goods and services we *may* be procuring)

| COMMODITIES | SERVICES |
|-----------------------------|---------------------------|
| ASPHALT MATERIALS | WINDOW BLINDS |
| AUDIO VISUAL EQUIPMENT | AC/ HEATING |
| AUTO SUPPLIES | CRANE & RIGGING SERVICE |
| BARRICADES | DEBRIS & WASTE REMOVAL |
| BATTERIES | EQUIPMENT MAINT. & REPAIR |
| CAMERAS & DIGITAL VIDEO | EQUIPMENT INSTALL/RENTAL |
| CELL PHONES | HIGH MAST LIGHTING |
| CONCRETE SUPPLIES | HIGHWAY EQUIP. RENTAL |
| CONES, TRAFFIC | INTERPRETIVE SERVICES |
| DRYWALL/CEILING TILES | JANITORIAL SERVICES |
| ELECTRICAL HARDWARE | LOCKSMITH |
| ELECTRONIC TEST EQUIPMENT | PAINTING |
| FASTENERS | PAINTING SERVICES |
| FENCE MATERIALS | PEST CONTROL/FUMIGATION |
| GUADRIL | PLUMBING |
| HUSKEE CONTAINERS | PORTA-POTTIE SERVICE |
| IT EQUIPMENT AND SUPPLIES | POTABLE WATER SERVICE |
| JANITORIAL SUPPLIES | PUMP REPAIR |
| LOCKSMITH EQUIPMENT | RECYCLING SERVICES |
| LUMINARIES AND LAMPS | RENTAL PROPERTY MTCE. |
| METAL FABRICATION | ROLL-UP DOOR REPAIRS |
| OFFICE EQUIPMENT / SUPPLIES | STORAGE CONTAINERS |
| PAINT SUPPLIES | TREE TRIMMING SERVICE |
| PAVEMENT MARKERS | VACTOR & RODDING SERVICE |
| POSTS | WEED ABATEMENT |
| RAINWEAR | |
| RESPIRATORS & FILTERS | |
| SAFETY EQUIPMENT | |
| SIGNS | |
| TANDEM DOLLIES | |
| TOOLS, HAND & POWER | |
| TRAFFIC SAFETY EQUIPMENT | |
| TRAFFIC SIGNAL PARTS | |



FREE
ADMISSION

Jack London Aquatic Center
115 Embarcadero
Oakland, CA
510.286.7110

Avoiding Online Tax Scams

It's tax season, which means it's also time for tax scams, with numerous online scams that attempt to steal people's tax refunds, bank accounts, or identities. Last year, the Internal Revenue Service (IRS) estimates it paid \$5.2 billion in fraudulent identity theft refunds in filing season 2013. Websense Security Labs reported in 2014 it saw approximately 100,000 IRS-related scams in circulation every two weeks.

This year, we need to be especially careful in light of the Anthem Breach, in which data from approximately 80 million customers was exposed, triggering new phishing attacks offering false claims of credit monitoring services.

Users who have already filed their taxes this season can still be vulnerable to tax-related scams. Many schemes take advantage of users by alleging to have information about the filer's refund, or noting a problem with the return that was previously filed.

One scam that has already been impacting users this season involves phishing emails claiming to be from Intuit's TurboTax. The emails prompt users to click on links to verify their identity or update their accounts in an attempt to download malware to the victim's machine, or steal data such as Social Security

numbers or financial information.

Below are some of the most common email scams users should be cautious about:

- The email says the user is owed a refund and should forward a bank account number where the refund may be deposited. Once the scammer has the bank account information, that account will see a big withdrawal, not a deposit.
- The email contains exciting offers or refunds for participating in an "IRS Survey." This fake survey is actually used to acquire information to perform identity theft.
- The email threatens the user with fines or jail time for not making an immediate payment, or responding to the email.
- The email includes a "helpful" downloadable document (e.g. "new changes in the tax law," a tax calculator, etc.). In reality, the download is a malicious file intended to infect your computer.

How To Avoid Becoming A Tax-Scam Victim

- Do not respond to emails appearing to be from the IRS. The IRS does not initiate taxpayer communications through email or social media to

request personal or financial information. If you receive an unsolicited email claiming to be from the IRS, send it to phishing@irs.gov.

- Do not respond to unsolicited emails and do not provide sensitive information via email. If the email appears to be from your employer, bank, broker, etc., contact the entity directly. Do not open any attachments or click on links contained in unsolicited or suspicious emails.
- Carefully select the tax sites you visit. Use caution when searching online for tax forms, advice on deductibles, tax preparers, and other similar topics. Do not visit a site by clicking on a link sent in an email, found on someone's blog, or in an advertisement. The website you land on may look just like the real site, but it may be a well-crafted fake.
- Secure your computer. Make sure your computer has all operating system and application software updates. Anti-virus and anti-spyware software should be installed, running, and receiving automatic updates. Ensure you use a strong password and different passwords for each account.

Source: <http://www.mbdia.gov>